

P32LC – NP01

Instruction Manual



[IM]-PKM-P32-LC-NP01-V1-ENG
01/12/2023



Table of contents

Chapt I :	Specifications.....	3
Chapt II :	Adjustments	3
1.	Rebound Adjuster.....	4
2.	Bump Adjuster.....	5
Chapt III :	Assembly indications.....	6
Chapt IV :	Warnings	7
Chapt V :	Services.....	7
Chapt VI :	Versioning.....	7
Chapt VII :	Notes	8

Chapt I : **Specifications**

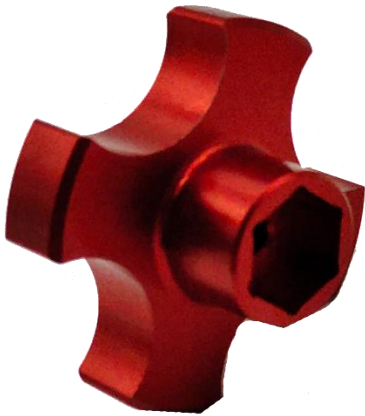
The PKM Consulting P32LC damper is a twin tube damper with a $\varnothing 32$ mm solid piston. Designed for the most exigent race cars as prototype, GT and hill climb. This damper is specifically developed for exigent cars and helps for a weight gain with its 1070 g per damper without spring.

The risk of cavitation is eliminated through product design, the fluid flow is always generated by the positive displacement of the piston. Thus, a low residual gas pressure ensures the operation of the damper and allows to optimize the level of friction.

This damper is delivered with two adjusters one for the bump the other for the rebound. Each module provide setting for the low and high speed with coaxial adjuster.

Chapt II : **Adjustments**

To setup easily your damper, a specific tool is available at PKM Consulting. OT-ASB-013-B will help you to setup your low-speed and high-speed adjuster.



1. Rebound Adjuster

Low Speed Rebound Adjuster (LSR)

- Type: Bleed adjuster
- Identification: Silver 3mm hexagonal screw on the red cap
- Number of positions: approx 30
- Click position 0: Fully clockwise at maximum force



High Speed Rebound adjuster (HSR)

- Type: Spring pre-loaded valve
- Identification: Silver 12mm hexagonal nut on the red cap
- Number of positions: approx 35
- Click position 0: Fully clockwise at maximum force. (Spring max preloaded).



2. Bump Adjuster

Low Speed Bump Adjuster (LSB)

- Type: Bleed adjuster
- Identification: Silver 3mm hexagonal screw on the black cap
- Number of positions: approx 30
- Click position 0: Fully clockwise at maximum force



High Speed Bump adjuster (HSB)

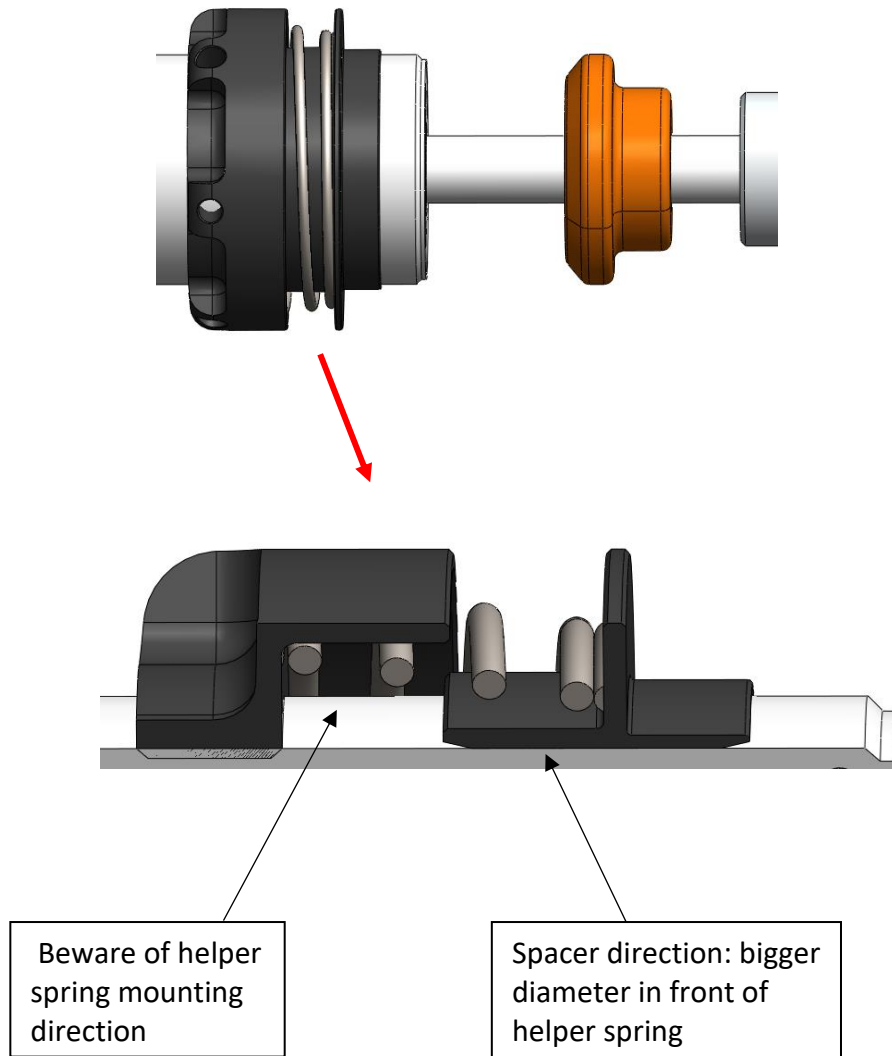
- Type: Spring pre-loaded valve
- Identification: Silver 12mm hexagonal nut on the black cap
- Number of positions: approx 35
- Click position 0: Fully clockwise at maximum force. (Spring max preloaded).



Chapt III : Assembly indications

Rear helper spring and spacer assembly:

The parts must be assembled as shown below:



Chapt IV : **Warnings**

- Dampers are important part of the car and can affect stability
- PKM Consulting cannot be held responsible for damage on the vehicle or injury if instructions and maintenance are not respected.
- Test the car at low speed after installing the product.
- For any anormal comportment of the car or the product, stop the vehicle and fix the problem.
- Clean your damper after use with adapted products.

Chapt V : **Services**

Services must be done every 5.000 km or every year.

PKM Consulting
428, Avenue de Copenhague
83870 Signes, France
+33494903487 or contact@pkm-consulting.com

Chapt VI : **Versioning**

REV	NAME	DATE	CHANGES
A	Bottai	01/12/2023	Creation



Chapt VII : Notes

.....

.....

.....

.....

.....

.....

.....

.....

.....

.....

.....

.....

.....

.....

.....